

HTE Equipment & Services



Compressed Air Systems

- Rotary Screw
- Reciprocating
- Dryers, In-Line Filters, Modular Piping
- Field Service, Parts, & Lubricant
- Rental Compressors & Dryers (25-450HP)



Nitrogen Generators - Plug-&-Play

- PSA
- Membrane



Abrasive Blast Systems

- Blast Cabinets & Rooms - Automatic & Semi-Automatic
- Media Recovery & Dust Collection Systems
- Parts & Media



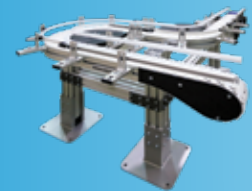
Robots

- Collaborative (Cobot) 6-Axis
- Traditional 6-Axis, SCARA, Gantry
- AMR - Autonomous Mobile Robots (Transport Bots)



Conveyors & Part Feeders

- Modular
- Sanitary/Food Grade
- Belt

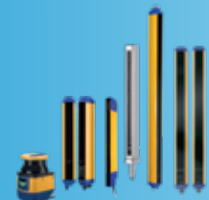


Machine Vision & Safety



3D Scanners

Safety Sensors/Curtains





ROTARY SCREW COMPRESSORS - OIL-FLOODED AND OIL-FREE

Atlas Copco

Atlas Copco's 119-year history in the air compressor industry has been marked by some of the most successful air compressor designs. They are known for being rugged and reliable, even in the most demanding, dusty, and harsh environments like cement production plants.

With their robust design and superb filtration systems, these compressors do their part to help you avoid expensive downtime and production delays.



"Full-Featured" units include an **INTEGRAL DRYER**

AIRkeeper

Monitor and control your Atlas Copco G series compressor using your smartphone.





SCROLL & PISTON COMPRESSORS - OIL-FLOODED AND OIL-FREE

Atlas Copco

Scroll Compressors - 2-30HP oil-free with pressures up to 145PSI

Piston Compressors - 2-60HP (recip, or reciprocating) compressors are available in oil-flooded, oil-free, vertical-, horizontal-, or no-tank configurations with pressures up to 580PSI

Compressors for every specification and application including:

- Shop Air
- Instrument Air
- Laboratory Air
- Medical Air
- Process Air



AIR DRYERS

Atlas Copco

Refrigerated Dryers - Cycling or non-cycling

Desiccant Dryers - Pro-Purge demand control, heated or heatless

Parker Airtek

Oil-Water Separators - Maintaining a sustainable environment

Energy Saving Timed Electric Drains



1.800.444.4831

www.htecompressedair.com



PLANT PROCESS & UTILITY EQUIPMENT

Atlas Copco

Nitrogen Generators

- PSA or Membrane
- High Purity
- Optimal Flexibility
- Efficient Control
- Plug-n-Play



Parker Airtek



RENTAL EQUIPMENT

Meeting Production Demands... No Matter What

When your machine is down for repair or routine maintenance, or when plant production demands more air than you have, HTE Compressed Air Solutions will help you maintain your production numbers with 24/7 support and on-site emergency rental compressor service.

- 25 - 450HP Electric & Diesel Compressors
- Air Dryers





PARTS, LUBRICANTS, & MODULAR PIPING SYSTEMS

Atlas Copco

HTE Inventory - Includes over \$1 million in parts and lube for most brands of air compressors and dryers.



DURATECH
lubricants

- OEM parts & lube for Atlas Copco oil-free and oil-injected compressors
- UNI parts by Atlas Copco for all other compressor brands
- Duratech lubricants for all other brands of compressors
- For modular piping see back page



RELIABLE LOCAL SUPPORT - 21 TECHNICIANS ACROSS 5 STATES



Peak Compressor System Efficiency

Compressor Service - HTE's experienced and flexible compressor service team is adept at working with plant maintenance departments at many levels. Some customers want a comprehensive maintenance partner, while others just need a little help in a pinch.

Quoted Labor Savings - We will tailor a compressor maintenance solutions to your specific needs.



1.800.444.4831

www.htecompressedair.com



ABRASIVE BLAST EQUIPMENT

CLEMCO®

ZERO®
Blast Cabinets

AEROLYTE Systems
by Corona Industries Corp.

SS White

Trinco

1. Direct pressure blast cabinet with turntable/workcar and track extension
2. Suction blast cabinet with reclaim and cartridge dust collector
3. The Wetblast FLEX all-in-one wetblasting system. The FLEX is engineered to provide high performance blasting with maximum dust suppression.
4. Blast pots
5. Plastic media pressure blast cabinet
6. Split level blast cabinets, suction or direct pressure; sizes range from 42" x 24" up to 96" x 48"
7. Dust collectors in bag or cartridge design

1



2



4



3



6



**TRADE-INS
Accepted**

5



7



**REBUILT
CABINETS**



BLAST MEDIA, PARTS & ACCESSORIES

30 Tons of Blast Media in Stock



- Aluminum Oxide
- Glass Beads



- Walnut Shells
- Crushed Glass



- Plastic
- Steel Shot



Blast hose, blast nozzles, metering valves, air supplied blast hoods with climate controls, peel off lenses, charcoal breathing air filters for all brands!



BLAST ROOMS & MEDIA-RECOVERY SYSTEMS

1. A-200 automated indexing blast cabinet
2. Through-feed conveyor machine with powered rollers and oscillating nozzles for automating the blasting of heavy parts
3. Sweep-in system for user-built blast rooms
4. Pre-Assembled Blast Rooms. Just connect the components and add power and air.
5. Automated tumble blast barrel up to 300 lb capacity
6. Tumble belt cabinets are built for customers who need efficient, reliable, high-production blasting.

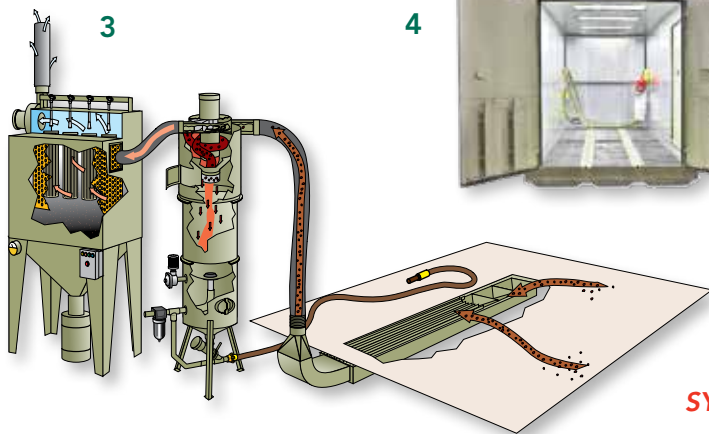
1



2



3



4



5



6



SYSTEM FINANCING AVAILABLE



ROBOTICS



Universal Robots World's #1 collaborative (cobot) industrial robot that teams up with people outside of safety cages, and requires no expensive programming or integration. Universal Robots empowers people.



Epson World's #1 SCARA robot and traditional robots that offer high precision, speed, performance, ease of use, and now with force guided sensing and optional machine vision - the highest industry value. World's only single source integrated vision guided 3D picking system.



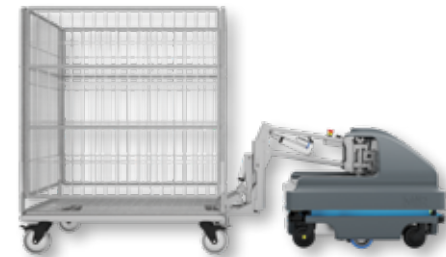
Mobile Industrial Robots (MiR) Autonomous Mobile Robots (Transport Bots) for automation of internal transport and logistics solutions. Optimize workflows, increase productivity, reduce costs, all with a rapid ROI of 8-16m.



ROEQ Productivity platforms for MiR autonomous robots including pallet loading, trailer, and cart modules.



UR20
44.1 lb Payload
68.9" Reach



UR3e
6.6 lb Payload
19.7" Reach

UR5e
11.0 lb Payload
33.5" Reach

UR16e
35.3 lb Payload
35.4" Reach



UR10e
27.5 lb Payload
51.2" Reach



**All-In-One
6-Axis Robots
Priced Under
\$14,600**



**All-In-One
SCARA Robots
Priced Under
\$10,000 - 13.2 lb
\$7,900 - 6.6 lb**





COMMON COLLABORATIVE ROBOT (COBOT) APPLICATIONS



MACHINE TENDING



PICK-&-PLACE WITH VISION



PALLETIZING



POLISHING / SANDING



SCREWDRIVING / FASTENING



DISPENSING / GLUING



AUTOMATED MOBILE ROBOT

1.800.444.4831



PRESS BRAKE TENDING



WELDING / SOLDERING

www.hteautomation.com



MACHINE VISION, 3D SCANNERS, SAFETY SENSORS/CURTAINS



Pilz Programmable safety controllers, safety relays, safety light curtains, emergency stops & pilot devices, stop time analyzers, non-contact safety sensors, interlocks, switches, monitoring relays



Datalogic Safety solutions for automation



Balluff Safety solutions for automation



ABB Programmable safety controllers, safety relays, safety light curtains, emergency stops & pilot devices, stop time analyzers, non-contact safety sensors, interlocks, switches, monitoring relays



Parco T-slotted aluminum extrusion, structural framing, grooved or smooth profiles, kits, full assemblies, 3D designer



MACHINE VISION



SensoPart Machine vision helps manufacturers speed up production, minimize defects, and reduce costs.



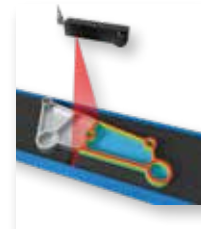
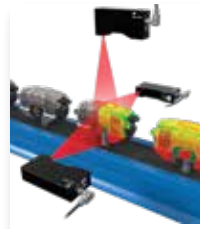
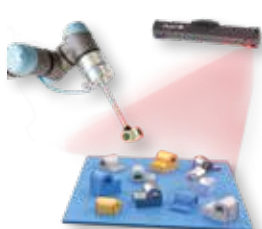
Datalogic Machine Vision Machine vision helps manufacturers speed up production, minimize defects, and reduce costs.



LMI Technologies 3D Profiler captures the shape of an object as opposed to 2D which only captures contrast. With 3D shape, you can measure geometric dimensions.



Photoneo 3D Vision bin-picking specialists





FACTORY AUTOMATION VALUE-ADDED SERVICES

We deliver the tailored solutions you need using our comprehensive manufacturing engineering skills honed over decades of practical in-plant experience.



CONTROLS PROGRAMMING

- Streamline and/or upgrade your machine programming.

COBOTS, ROBOTS, & AMR INTEGRATION

- Robot proof-of-concept testing to final implementation
- In-plant Autonomous Mobile Robot (AMR) system discovery, planning, specification & implementation w/JMP Solutions

VISION INTEGRATION

- Development and implementation of turnkey barcode traceability and/or machine vision solutions

CERTIFIED TRAINING

- Universal Robots Authorized Training Center
- Control system & component training
- Barcode ID systems and machine vision training

COMPONENT ASSEMBLY

- Custom electrical control cabinet preassembly
- Control panel assembly & wiring
- OEM device sub-component assembly

PROOF OF CONCEPT

- Collaborative program to prove out your ideas

ASSEMBLED SOLUTIONS

- Customized products built-to-order

IN-PLANT FIELD SERVICE

- When you need engineering skills you don't have on-staff, our experienced *TECHTEAM* can help.

OEM PARTS KITTING

- Reduce line-items ordered and take delivery of one item.



1.800.444.4831

www.hteautomation.com



ENGINEERED MODULAR PIPING

Atlas Copco

AIRNET

**10 Year
 Warranty**

- Economical
- Fast to install
- Aluminum, stainless steel, or polyamide
- Easily expandable system with smart design
- Highly flexible for future expansion



We use the planner tool to help you design the compressed air network structure in detail, calculating the system pressure drop, visualizing the complete system in 3D, creating the Bill of Material, and estimating the assembly time.

"The use of AIRnet pipework throughout the factory gives us a leak-free environment. We've seen savings right from day one as our energy consumption is much lower."



Emergency Service - 800.444.4831

LENEXA, KS

1566 N. Topping Ave.
 Kansas City, MO 64120
 913.440.4477

SPRINGFIELD, MO

4319 S. National Ave.
 Springfield, MO 65810
 417.724.2231

ST. LOUIS, MO

2021 Congressional Dr.
 St. Louis, MO 63146
 314.731.4444

BLOOMINGTON, IL

1701 Empire St.
 Bloomington, IL 61704
 217.615.4440